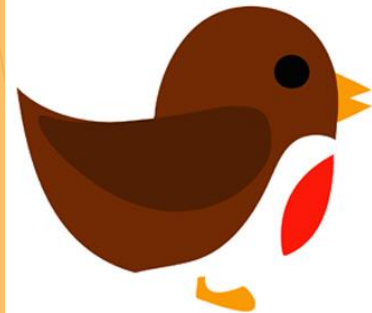
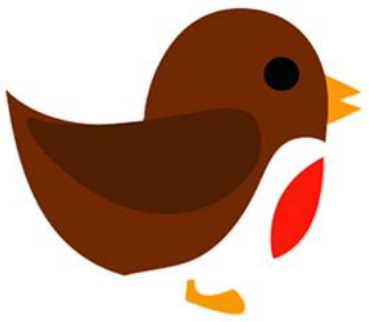


Welcome to Robins Class! 2024-2025





Staff in Robins Class

- ▶ Miss Tyler is in class Mondays, Tuesdays, Thursdays and Fridays.
- ▶ Mrs Lloyd takes the pupils for Forest Schools on Wednesday afternoons.
- ▶ Mrs Reavis teaches the pupils on Wednesday afternoons.
- ▶ Mrs Coral Milner is the Class Teaching Assistant who is with Robins every day.

Home, School Agreement

Nurture, Grow, Succeed Together!

At Great Wheltenham Church of England Primary School we are passionate about ensuring that our children and families have an enjoyable, exciting, and successful experience at school. We want to work closely as a team to help our children enjoy success, have different experiences, and grow as people. Our roles are key to enabling children to understand the joy, wonder and satisfaction of learning about the world around them.

As a School we will:

- Provide a safe, happy, nurturing environment where all children are valued, respected, and listened to.
- Provide excellent teaching and an engaging curriculum to meet the needs of all children.
- Provide opportunities for your child to practise what they have learnt in school at home.
- Regularly share updates on ~~children's~~ progress and experiences in school through parent consultations, class newsletters, website updates, share days and more.
- Support your child to develop a moral and ethical compass for life enabling them to grow up to be the best person they can be through a values -based education philosophy.
- Provide opportunities for children to develop positive, social relationships, self-esteem and a sense of responsibility.
- Respect confidentiality of information regarding each child.
- Provide information to you about our school, including relevant policies, meetings, workshops, and events by keeping our website up-to-date, emailing information, sharing regular school newsletters and updating our calendar of events.
- Build positive relationships with pupils, families and the wider community.

Signed: _____

As a Parent/Carer I will:

- Ensure that my child attends school regularly, arrives on time and is wearing school uniform and with the proper equipment.
- Let the school know of any concerns or worries that may be affecting my child's learning, behaviour, or ability to do home learning so we can support and resolve quickly.
- Attend meetings with my child's teacher and other staff, aiming to be positive and productive, working together to move my child on in their learning.
- Respect the confidentiality of each child.
- Support and work with the school to ensure that the behaviour policies we use to enhance positive relationships are maintained.
- Regularly read information on the website, check the online calendar and read updates so I am kept up-to-date with important details of relevant policies, meetings, events and information about my child.
- Ensure the school has up to date emergency contact numbers.
- Support my child to try their best with their home learning.

Signed: _____

As a pupil I will:

- Come to school regularly and on time.
- Wear school uniform (or PE kit on appropriate days).
- Behave in a safe and friendly way following our 3 golden rules
 - Everyone has the right to be safe
 - Everyone has the right to learn
 - Everyone has the right to do their job.
- Be polite, helpful and respectful to everyone in school.
- Take an active role in my learning – engaging with new experiences and challenges in a positive way.
- Take care of equipment, the building and school grounds
- Use the internet safely and responsibly in school and at home.
- Reflect on my choices and learn from all my experiences.
- Tell a member of staff if I am worried or unhappy.
- Try my best with home learning and return it to school at the correct time.

Signed: _____

Outdoor Learning:

- To** develop pupils' understanding of the practical applications of their learning.
- To** invite visitors from beyond the school to share their expertise with us.
- To** make the most of the learning opportunities in the immediate locality and further afield.
- To** remain in touch with the 'real world' beyond school.
- To** enhance pupils' enjoyment and engagement in their learning.
- To** develop a positive relationship with our natural world.
- To** relax busy minds, promoting mindfulness and improving mental wellbeing.

Our Ethos:

- To** inspire our children to see learning as a personal journey.
- To** have passion and ownership of our learning
- To** be a risk taker in learning.
- To** know that mistakes are an important part of the learning process.
- To** keep yourself and others safe.
- To** respect others, ideas, property and well-being.
- To** persevere and NEVER give up.
- To** try something new.
- To** share our learning with each other, their families, the wider community and learn from each other.

Nurture, Grow, Succeed Together



Partnerships:

- To** work with other schools (in our trust and locality) to share best practice.
- To** create working partnerships beyond the immediate locality.
- To** provide opportunities for pupils to learn in a range of places, settings and environments.
- To** access expertise to support both staff and pupils in a range of curriculum areas.
- To** give our pupils new opportunities and support their transition upon entering and finishing in our setting.
- "Success is best when its shared"**

Philosophy:

- To** demonstrate philosophical thinking – the love of wisdom, including happiness and kindness - not just cleverness.
- To** support views and opinions with sound reasoning.
- To** build on each other's ideas.
- To** challenge assumptions you and others may make.
- To** look for alternative possibilities in discussion.
- To** celebrate critical and creative thinking for different tasks.

Robins Timetable

	8.50-9.05	9.10 – 9.30	9:30-10:30		10:30 – 10.45	10.45 – 12.00		12:00-1:00	13:00-13:15	13:15 – 14:00	14:00 – 14:45	14:45 – 15:05
Mon	Early Work Register Time	Phonics/ Spelling Act.	English - Writing		Break	Q. Reading	Maths	Lunch	Maths Meet	Topic (History/D.T.)		CW/ Storytime
Tues	Early Work Register Time	Phonics/ Spelling Act.	English - Writing			Q. Reading	Maths		Maths Meet	Topic (History/D.T.)	P.S.H.E./French	CW/ Storytime
Wed	Early Work Register Time	Handwriting	Forest Schools (ML)			Forest Schools (ML)			Maths Meet	English - Grammar (ZR)	Computing (ZR)	Storytime
Thur	Early Work Register Time	Phonics/ Spelling Act.	English - Writing			Q. Reading	Maths		Maths Meet	Science		CW/ Storytime
Fri	Early Work Register Time	Spelling Test	R.E.	Collective Worship		Q. Reading	Maths		Maths Meet	English - Reading	Finishing Off Activities/ Homework	Story time

Time Table

- ▶ English and Maths is taught mostly in the mornings.
- ▶ Spelling activities and Phonics are taught at least 3 times a week.
- ▶ Maths Meetings take place 4 times a week.
- ▶ Topic learning will change every three weeks - this half term we will be learning about History and Design and Technology.
- ▶ Our focus in History is 'The Gunpowder Plot'.
- ▶ In Design and Technology our learning is based around 'Making a Vehicle'.
- ▶ Daily 'Wellbeing Pit stops' take place throughout the school day to develop focus and concentration with opportunities to learn strategies for feeling calm and relaxed.

Learning in Robins Class

- ▶ Our curriculum is designed around learning key skills and knowledge and understanding.
- ▶ We learn in lots of different ways - active/practical activities, independent tasks and collaborative group tasks.
- ▶ Children will work as a class, with partners, in small groups as well as independently.
- ▶ Many varied learning opportunities are shared through the school website and Facebook page.

School Trips in Robins Class

- ▶ In Robins we will be taking part in a range of trips across the year. These enable our pupils to extend and enrich their learning experiences.

AUTUMN TERM:

- ▶ Trip to Abbeygate Sixth Form College, Escalator Day - Thursday 10th October
- ▶ We often require volunteers for school trips, if you think you might be able to help, do let me know.

Reading in Robins Class

- ▶ We aim to hear each child read at least once a week.
- ▶ We encourage Y2 pupils and some Y3 pupils to read books twice through to develop word recognition, understanding and improved confidence.
- ▶ We read and share stories in class daily.
- ▶ Every week the pupils take part in an extended reading lesson.
- ▶ Pupils have the opportunity to visit our book corner throughout the school day accessing a wide range of reading books.
- ▶ Y2 pupils also have the opportunity to borrow a 'Reading for Pleasure' book. These will be given out this week.
- ▶ School library will be open to families on a Friday afternoon, after school.

Assessment for Learning

- ▶ Children's work in books are marked and feedback/next steps will be given.
- ▶ Verbal feedback is given within lessons.
- ▶ Children will complete a maths, reading and SPaG assessment at the end of each term.
- ▶ Children will complete independent writing tasks throughout the year which will be assessed.
- ▶ The assessments above will give us an indication of whether your child is working towards the expected level, at the expected level or at a greater depth level in each subject.
- ▶ In May, Year 2 pupils will be taking in the Optional End of Key Stage 1 tests in Reading, SPaG and Maths
- ▶ Year 2 pupils who did not pass their Phonics test in Year 1 will re-take the test in June.

Homework

Reading:

- ▶ Your child should have a reading book which they should be reading at home and should be brought to school each day. They should be reading 5 times a week at home, this should be for just 5-10 minutes.
- ▶ Please do comment in their reading diary in the home section. These are usually checked in school daily.
- ▶ The Reading Challenge for this year has begun with an 'under the sea' theme. Each time you hear your child read please date and initial a star in their bookmark.
- ▶ Once your child has completed a bookmark we will move them onto the next stage. They will be rewarded with 10 house points!



Homework

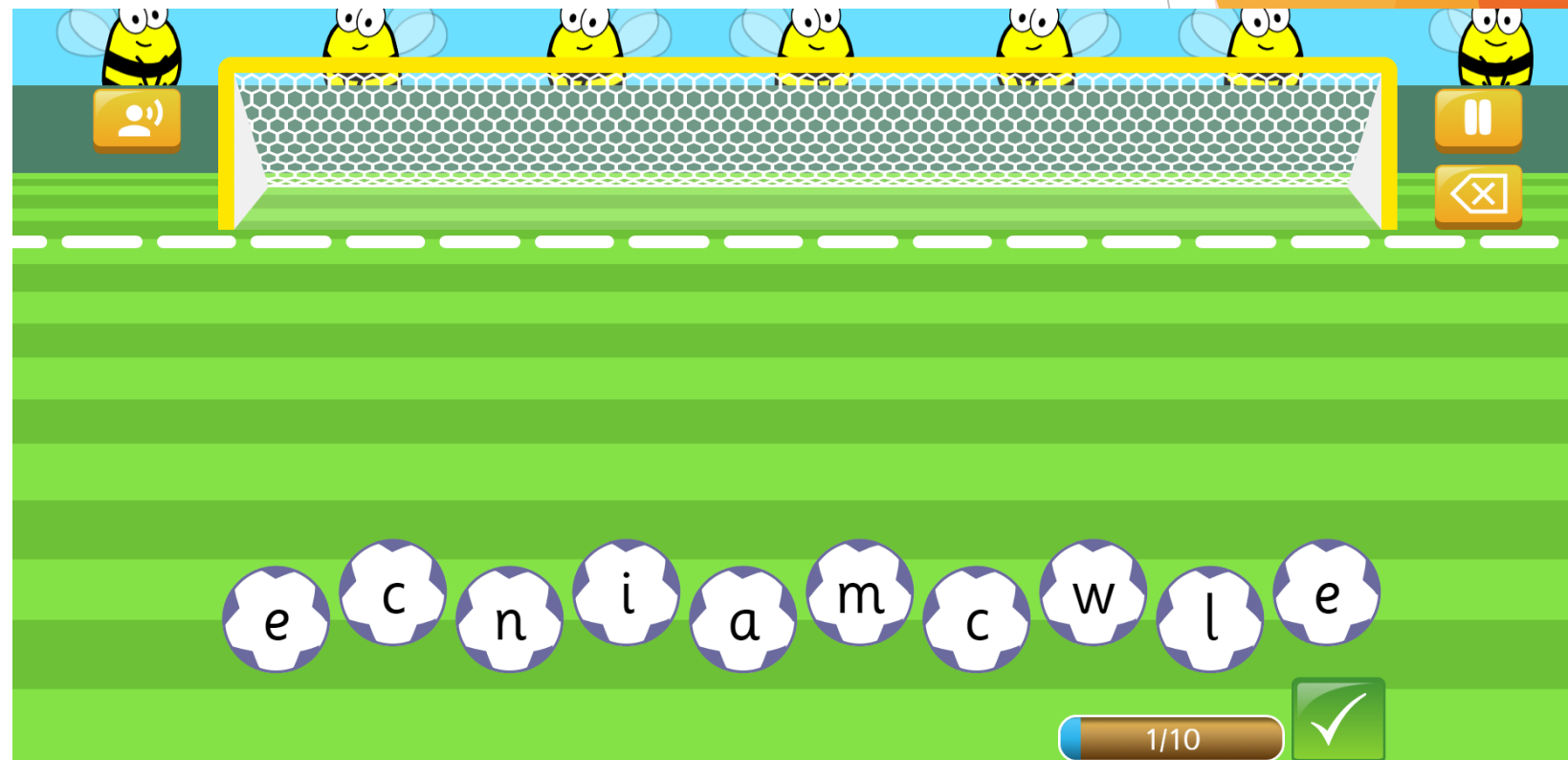
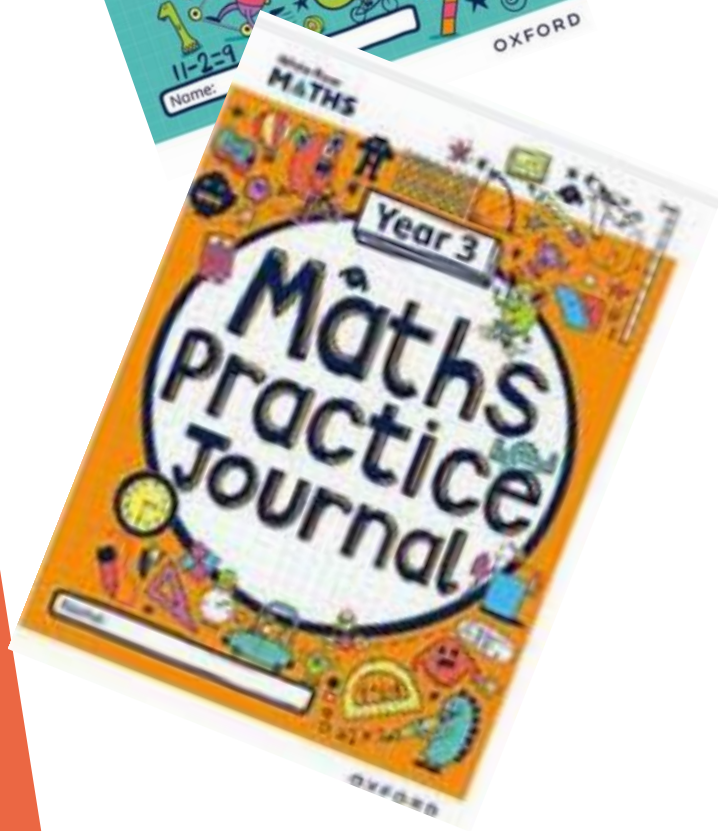
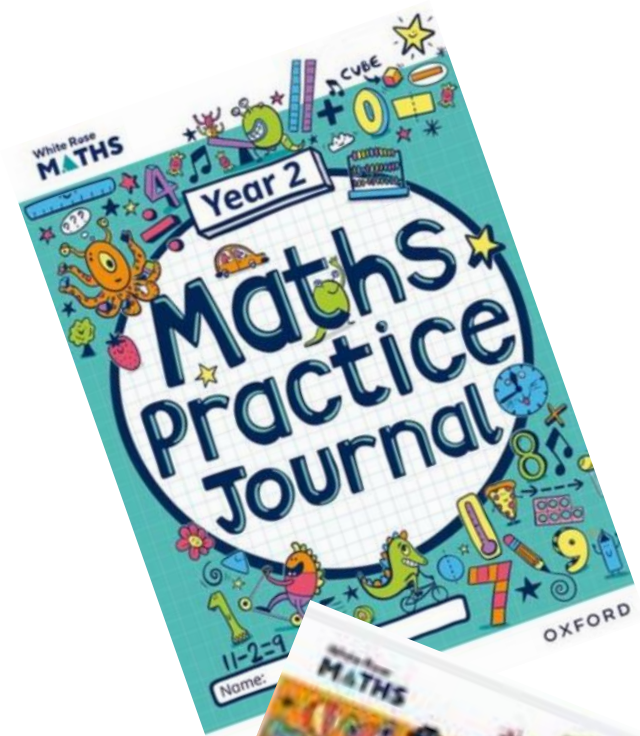
Spelling:

- ▶ Given out on a Monday.
- ▶ We spend time in class learning the spelling rule and practising the words throughout the week.
- ▶ Please do encourage your child to practice their weekly spellings on 'Spelling Shed' the new spelling pattern will be updated each Monday.
- ▶ The children will be tested on a **Friday** (their score will be written in their reading record under their spelling sticker each week).

Homework continued...

Maths Homework

- ▶ The children will be set homework on a **Friday** in their Maths Practice Journal and this is due in by the following Thursday.
- ▶ Homework should be completed in their homework books in pencil. Each activity is based on their learning in school encouraging the children to practice and reinforce skills.
- ▶ On some occasions, pupils may have particular questions highlighted, please encourage your child to complete the questions first.
- ▶ We encourage you to support your child in completing these activities.
- ▶ We do not expect children not to spend more than 30 minutes on this weekly task.



Friendly reminders

- ▶ In the morning encourage your child to bring their own book bag into school, putting reading books and reading diaries into the correct coloured boxes, developing independence skills.
- ▶ All children need a water bottle in school every day. Please send them in on a Monday and we will send them home on a Friday for cleaning.
- ▶ Please make sure all school uniform is labelled - if any items go missing we can make sure they are returned to the right families.
- ▶ We suggest P.E. kits are in school all of the time. P.E. days this term are on a Wednesday (Forest School) with Active Lunch Club on a Tuesday.

Throughout the year, if you have any questions, concerns or would like to discuss any matters, there are a different ways you can contact me:

- ▶ Before or after school at the classroom door
- ▶ Please telephone the school to arrange a phone call or meeting
- ▶ Email the school -
n.tyler@greatwhelnethamprimary.org.uk

